

➤ **SERIES 16**
DC MOTOR



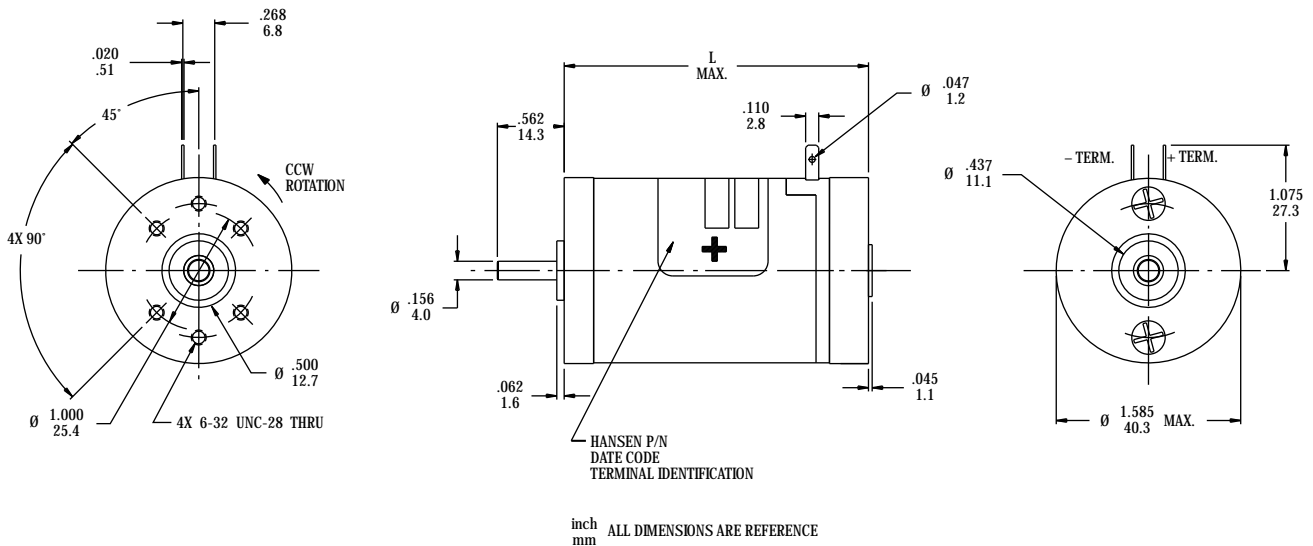
STANDARD FEATURES

- Low Cogging Armature
- Ball Bearings
- High Starting Torque
- Precision Die Cast End Bells
- Class B Temperature Rated
- Reversible
- Stainless Steel Output Shafts

STANDARD MOTOR SPECIFICATIONS

Part Number	Rated Voltage VOLTS	No Load		Rated			Voltage Constant V/KRPM	Torque Constant OZ-IN/AMP	Terminal Resistance OHMS	"L" Dimension INCH
		Speed RPM	Current AMPS	Torque OZ-IN	Speed RPM	Current AMPS				
116-12612	12	5600	.370	5	4750	2.00	2.1	2.8	1.40	2.600
116-12619	19	5600	.290	5	4850	1.30	3.3	4.5	2.60	2.600
116-12624	24	5600	.240	5	4950	.850	4.1	5.5	3.90	2.600
116-12912	12	5600	.370	6	4750	1.90	2.1	2.8	1.20	2.900
116-12919	19	5600	.290	6	4850	1.50	3.3	4.5	2.20	2.900
116-12924	24	5600	.240	6	4950	1.20	4.1	5.5	3.10	2.900

Speeds are +/- 10%, Currents are maximums, all other values are reference.



OPTIONAL FEATURES

- Optical Encoders
- Voltages and Performance
- 2" Gearbox
- Noise Suppressors
- Custom Shafting
- Custom Leads and Terminations
- Custom Mounting
- Rear Shaft Extensions

As well as these standard motors, we provide a fully equipped engineering facility to custom build motors to your requirements. Many different motor lengths, mounting methods and performance levels are available in a custom motor.