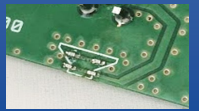


2.4GHz – ProAnt Niche Antenna



PRO-EB-592

Request Samples



Check Inventory



8.0 x 4.0 mm

RoHS/RoHS II Compliant

MSL Level = 1

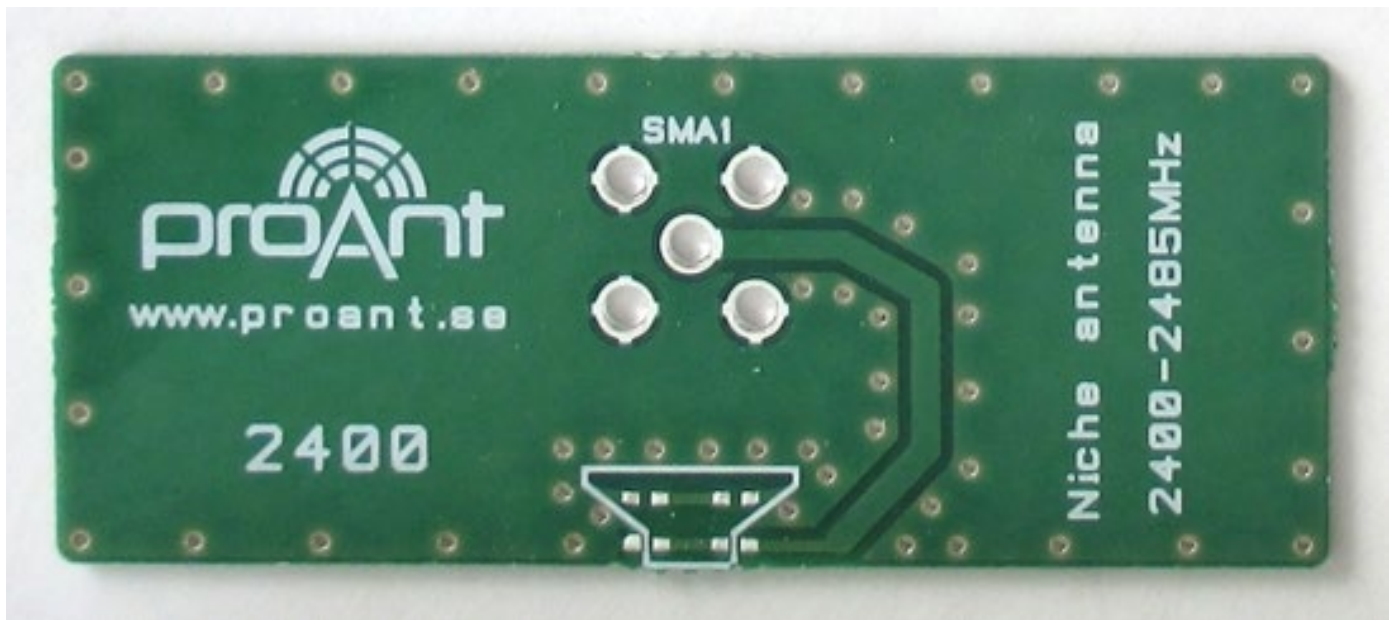
Features

- Very low cost, Patented Technology
- Business Model : License Agreement
- Compact
- Highly efficient ($\eta > 83\%$)
- Low Return Loss (RL < -12 dB)
- Integration : Along PCB Edge

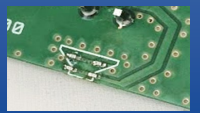
Applications

- 2.4 GHz - BT/BLE/ZigBee/ISM Applications
- IoT, M2M
- Wearables
- Wireless Remote Control
- Personal Area Networks (PAN)
- Industrial/Commercial equipments

Product Image



2.4GHz – ProAnt Niche Antenna



PRO-EB-592

Request Samples



Check Inventory



8.0 x 4.0 mm

RoHS/RoHS II Compliant

MSL Level = 1

Electrical Specification

| Parameter | Specification | | | Unit |
|---------------------|---------------|------|-------|----------|
| | Min | Typ | Max | |
| Operating Frequency | 2400 | | 2500 | GHz |
| Center Frequency | | 2450 | | |
| Return Loss | | | -12.3 | dB |
| Polarization | Linear | | | |
| Peak Gain | | | 4.1 | dBi |
| Efficiency | 83 | | | % |
| Impedance | | 50 | | Ω |

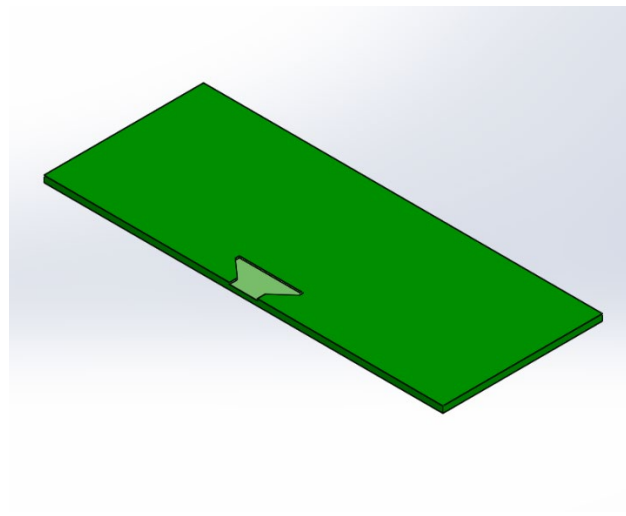
Note: All test measurements were conducted with the antenna on a 50 x 20 mm Evaluation board. Please note that the performance is dependent on the ground plane dimensions, tuning components and application environment.

Mechanical Specification

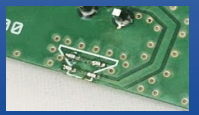
| Parameter | Specification |
|----------------------------|--------------------------|
| Antenna Dimension | 8 x 4 mm |
| Evaluation board Dimension | 50 x 20 mm |
| Mounting Type | Directly engraved on PCB |

Measurement Setup

The antenna measurements were done in free space, with the antenna implemented on a 20 x 50 mm PCB.



2.4GHz – ProAnt Niche Antenna



PRO-EB-592

Request Samples



Check Inventory

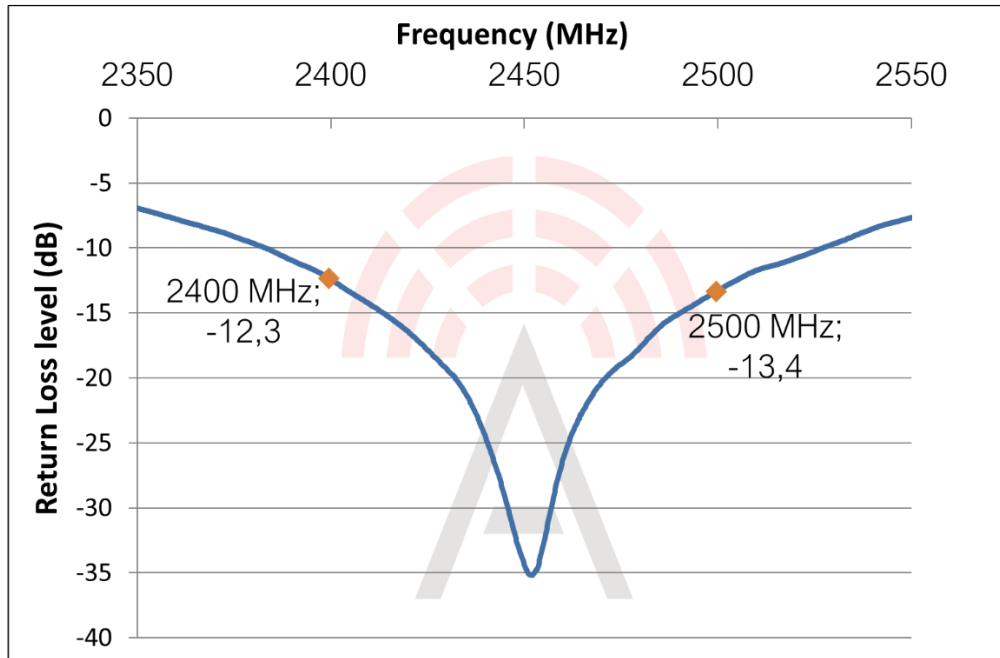


8.0 x 4.0 mm

RoHS/RoHS II Compliant

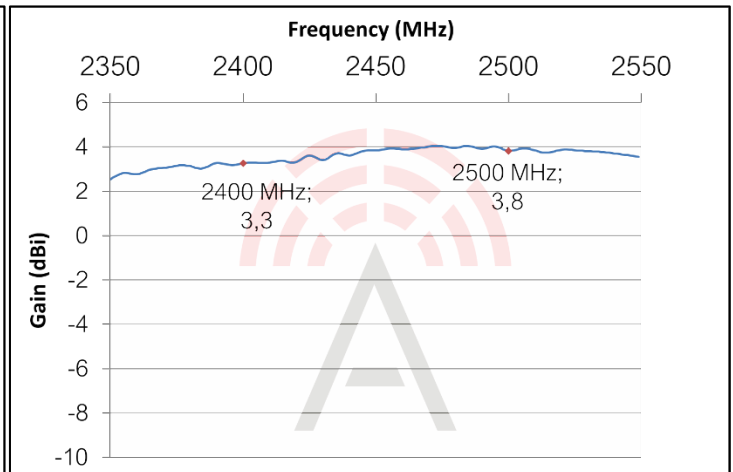
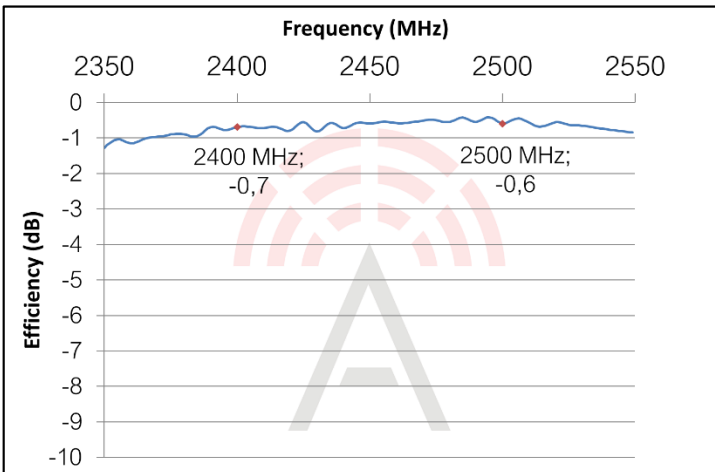
MSL Level = 1

Reflection Characteristics - Return Loss



Total Radiation Efficiency

Maximum Radiation Gain

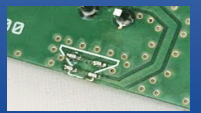


5101 Hidden Creek Ln Spicewood TX 78669
Phone: 512-371-6159 | Fax: 512-351-8858
For terms and conditions of sales, please visit:
www.abracon.com

REVISED: 09-20-21

ABRACON IS
ISO9001-2015
CERTIFIED

2.4GHz – ProAnt Niche Antenna



PRO-EB-592

Request Samples



Check Inventory

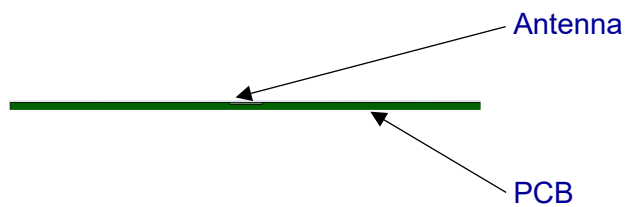
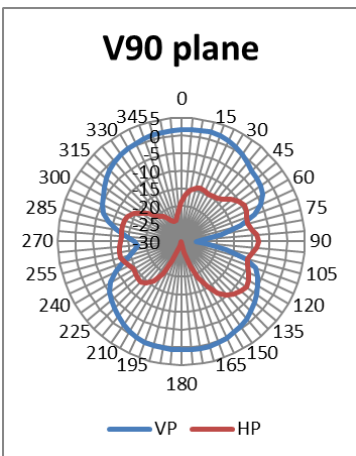
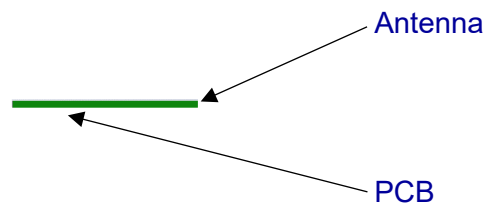
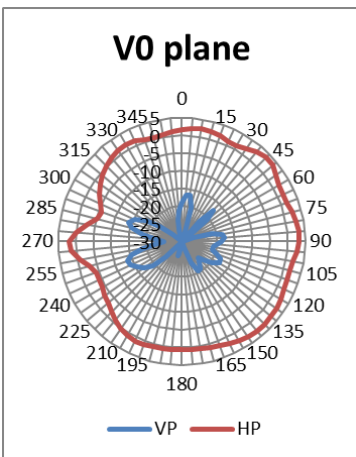
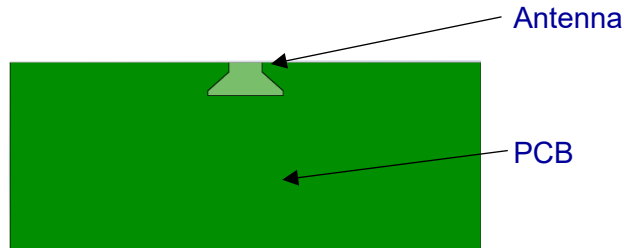
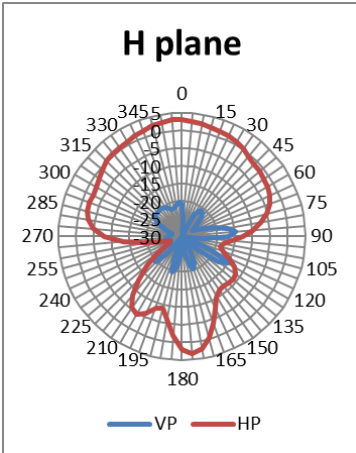


8.0 x 4.0 mm

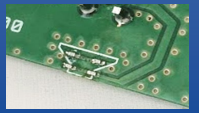
RoHS/RoHS II Compliant

MSL Level = 1

Radiation Characteristics - 2D Pattern (2.45 GHz)



2.4GHz – ProAnt Niche Antenna



PRO-EB-592

Request Samples



Check Inventory



8.0 x 4.0 mm

RoHS/RoHS II Compliant

MSL Level = 1

Licensing Information

License agreement information, terms and conditions, and design advice are provided upon request. Please send all requests to info@proant.se

ATTENTION: Abracon LLC's products are COTS – Commercial-Off-The-Shelf products; suitable for Commercial, Industrial and, where designated, Automotive Applications. Abracon's products are not specifically designed for Military, Aviation, Aerospace, Life-dependent Medical applications or any application requiring high reliability where component failure could result in loss of life and/or property. For applications requiring high reliability and/or presenting an extreme operating environment, written consent and authorization from Abracon LLC is required. Please contact Abracon LLC for more information.



5101 Hidden Creek Ln Spicewood TX 78669
Phone: 512-371-6159 | Fax: 512-351-8858
For terms and conditions of sales, please visit:
www.abracon.com

REVISED: 09-20-21

ABRACON IS
ISO9001-2015
CERTIFIED