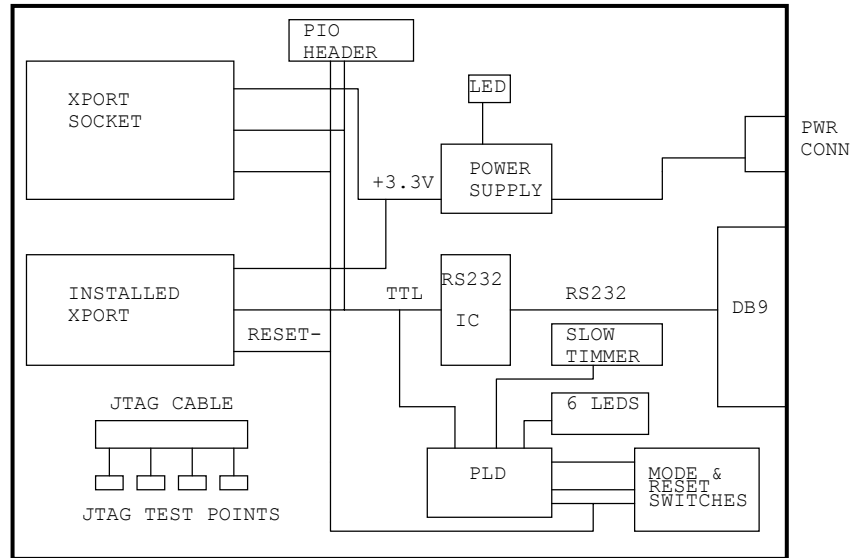
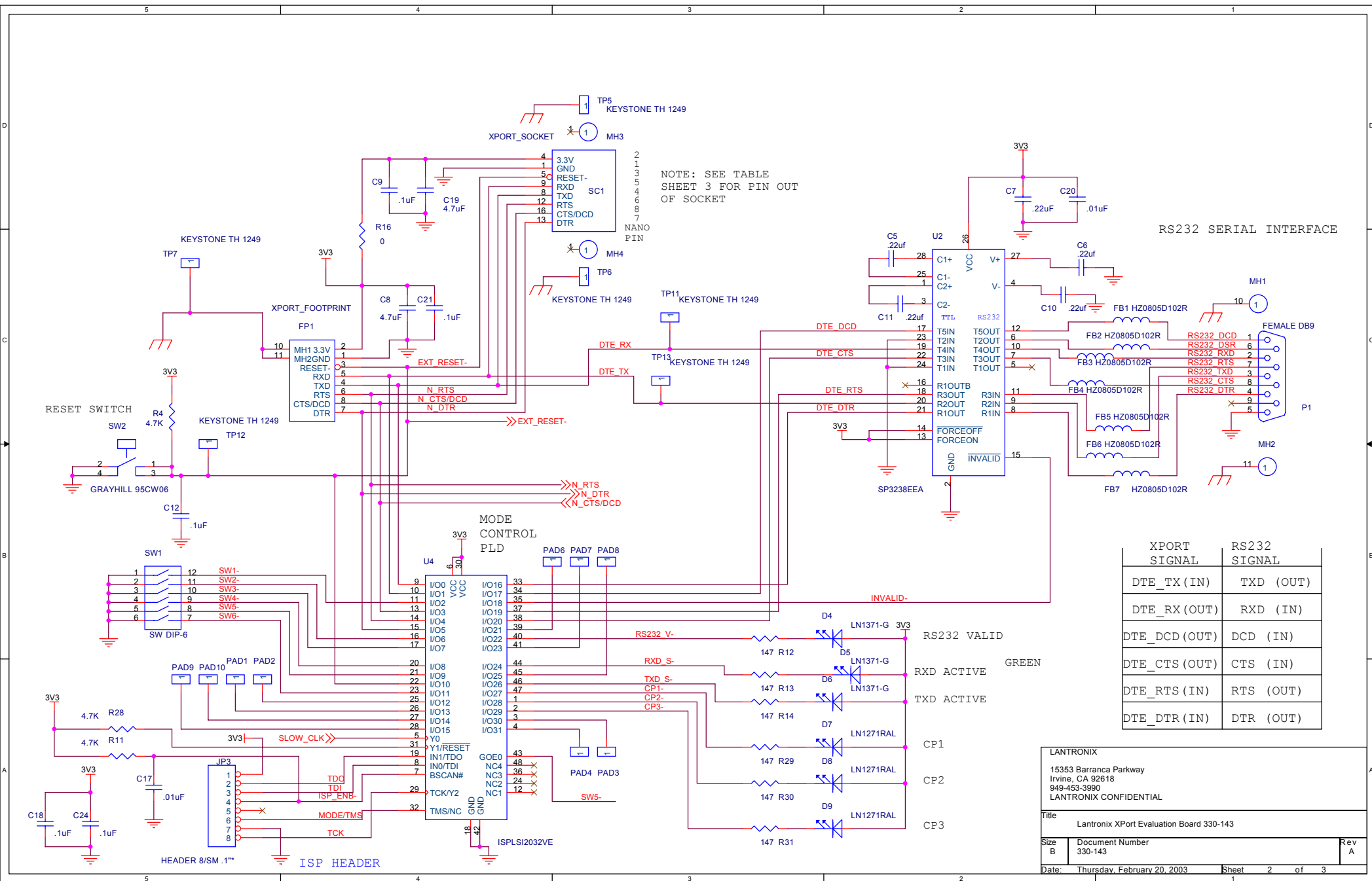


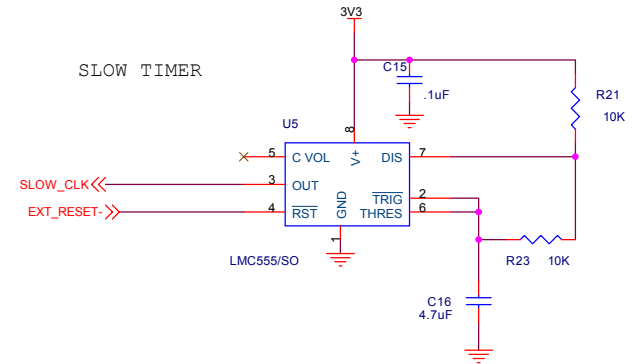
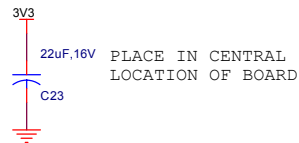
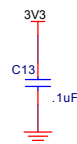
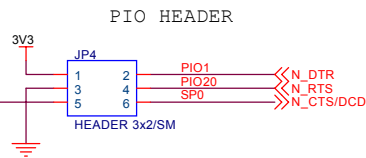
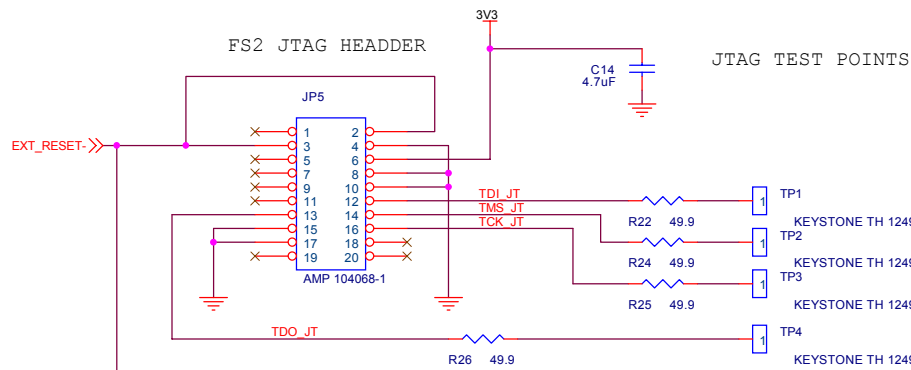
LANTRONIX XPORT EVAL BOARD



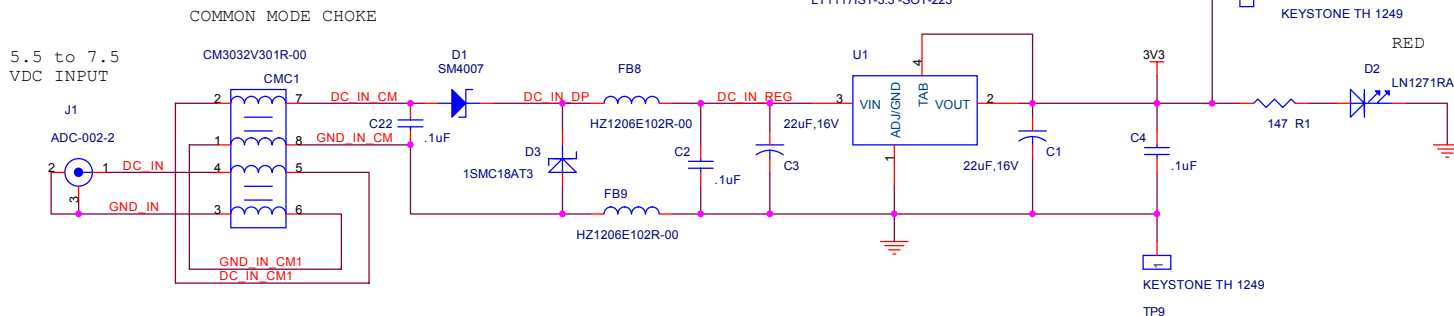
REV	COMMENT		AUTHOR	DATE
X1	INITIAL CUSTOMER REVIEW		R.KENT	7/9/02
X2	REVIEW #1 INPUTS		R.KENT	7/17/02
X3	CHANGED U4 TO ISP AND U1 TO SP3238EEA		R.KENT	7/18/02
X4	CHANGED REFERENCE NUMBERS		R.KENT	7/19/02
X5	CHANGED VCC-3.3 to 3V3, ADDED CAP C24		R.KENT	7/27/02
X6	SWAPPED SOME PINS ON CMC1 & U2 TO AID PCB LAYOUT		R.KENT	7/29/02
X7	Changed Nano SC1 power		R.KENT	7/30/02
X8	CHANGED FB8 & FB9 TO HZ1206102R-00		R.KENT	8/8/02
X9	CHANGED R21 & R23 TO 10K AND NAME TO XPORT		R.KENT	8/21/02
X9	PRE PROD REL PER ECO:91G475-00		R.KENT	11/20/02
A	Production Release	C. Brower		02/20/03

LANTRONIX 15353 Barranca Parkway Irvine, CA 92618 949-453-3990 LANTRONIX CONFIDENTIAL		
Title Lantronix XPort Evaluation Board 330-143		
Size B	Document Number 330-143	Rev A
Date:	Thursday, February 20, 2003	Sheet 1 of 3





XPORT RJ45 PIN	XPORT SOCKET	XPORT RJ45 PIN
1	PIN 1	NU
	NU	PIN 4
3	PIN 5	NU
	NU	PIN 8
5	PIN 9	NU
	NU	PIN 12
7	PIN 13	NU
	NU	PIN 16



LANTRONIX 15353 Barranca Parkway Irvine, CA 92618 949-453-3990 LANTRONIX CONFIDENTIAL		
Title Lantronix XPort Evaluation Board 330-143		
Size B	Document Number 330-143	Rev A
Date: Thursday, February 20, 2003	Sheet 3	of 3