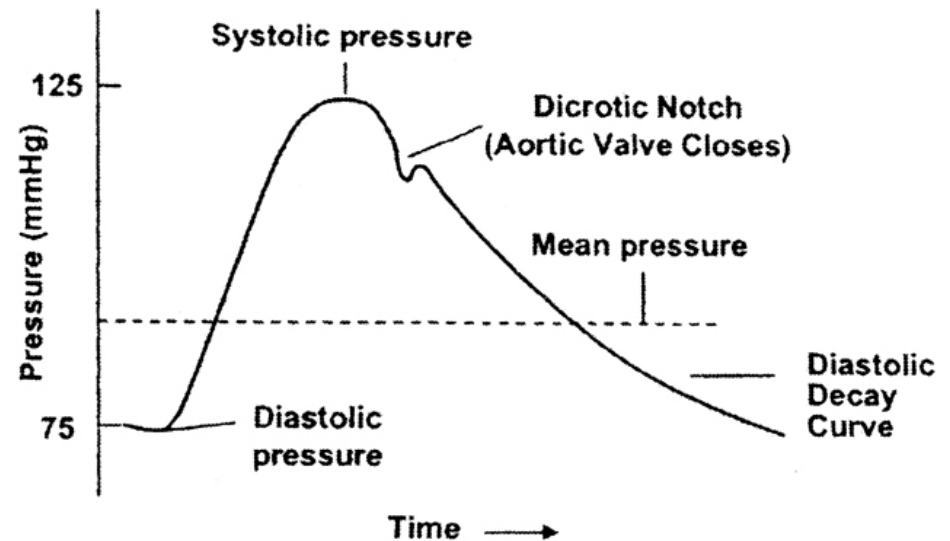
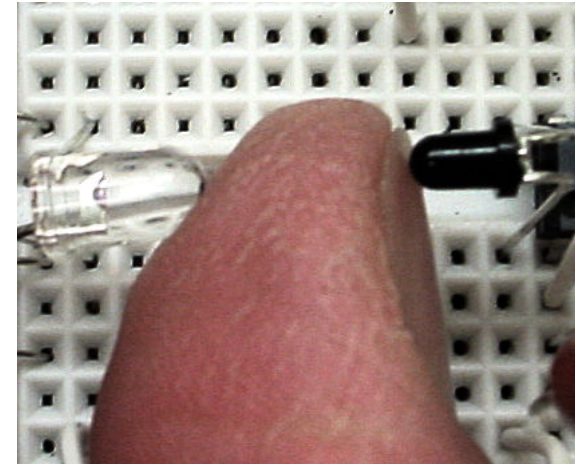


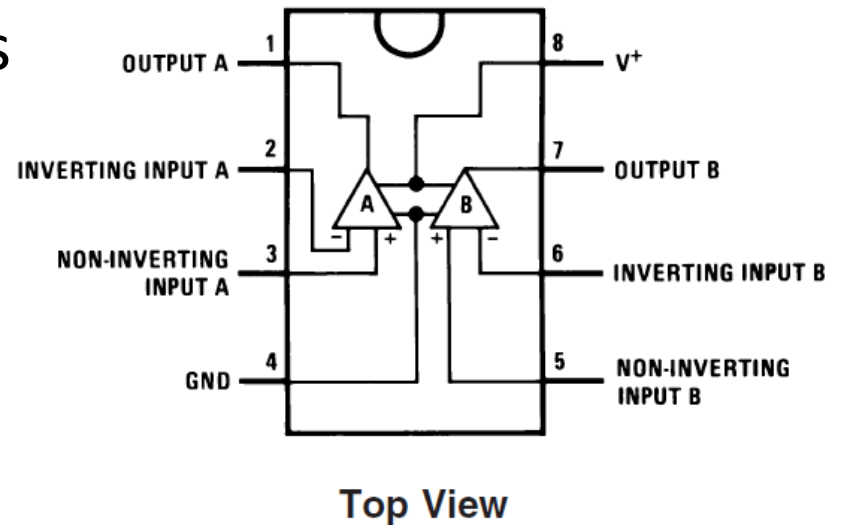
Project: Pulse meter

- Idea: Use noninvasive infrared light to probe blood pressure and pulse rate in a finger tip.
- Uses: A variant of this device is used routinely in hospitals and is called a pulse-oximeter.
- Components:
 - Comparator
 - Amplifiers and filters
 - Light emitting diodes and photosensors

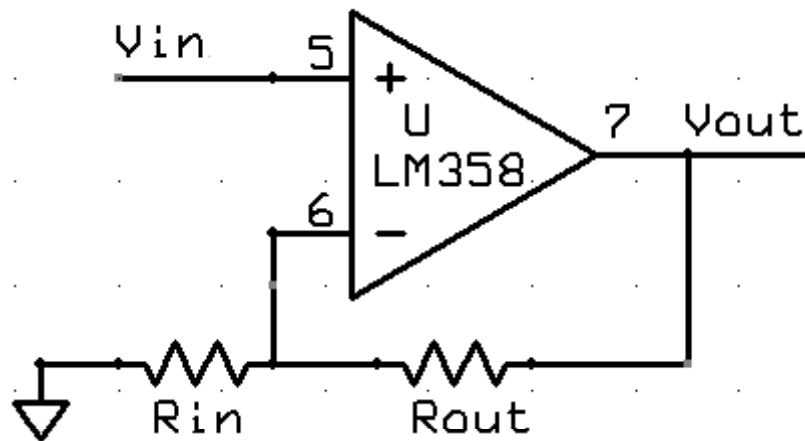


Operational Amplifier LM358

- Opamp is used in many circuits to compare voltages, amplify voltages, or to amplify currents.
- One physical DIP package contains two opamps. Each opamp has many transistors, but we can usually ignore the internal complexity.
- Opamps require power to run, in our case +5 volts on pin 8 and -5 volt on pin 4.



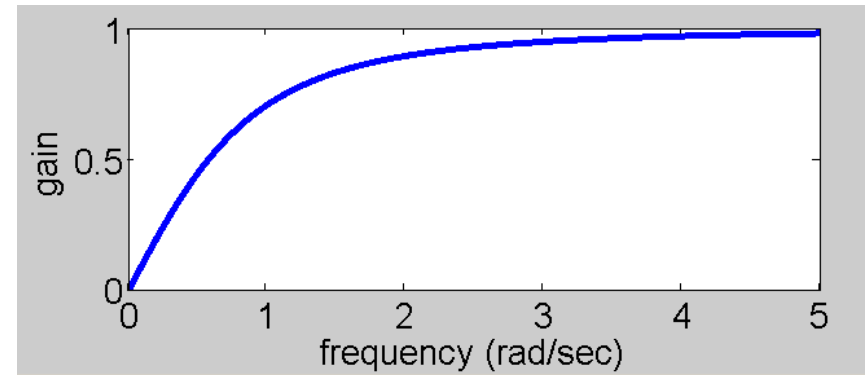
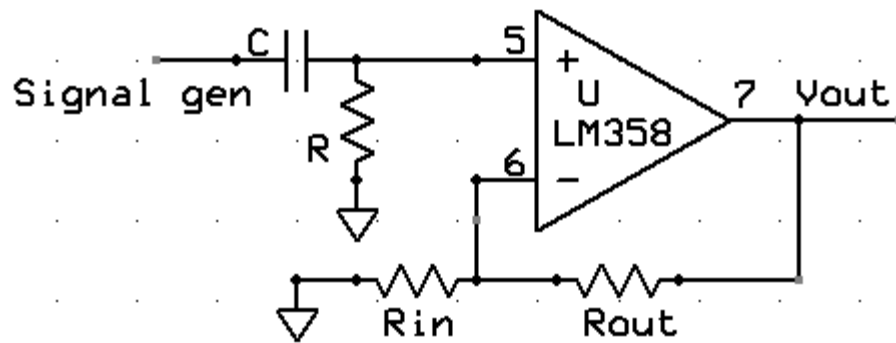
LM358 as an amplifier



- $V_{out} = V_{in} * (1 + R_{out}/R_{in})$
- V_{out} is limited to being no bigger than +9 volt and no smaller than -1 volt.
- Special case: if you leave out R_{in} and make $R_{out} = \text{zero}$ (a wire) then $V_{out} = V_{in}$. Then why bother? LM358 acts a current amplifier with a gain of several million.

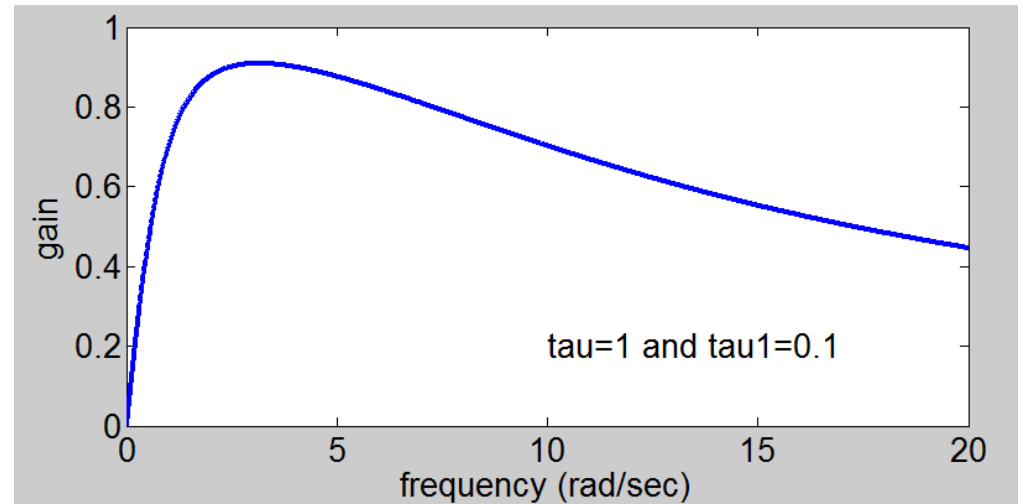
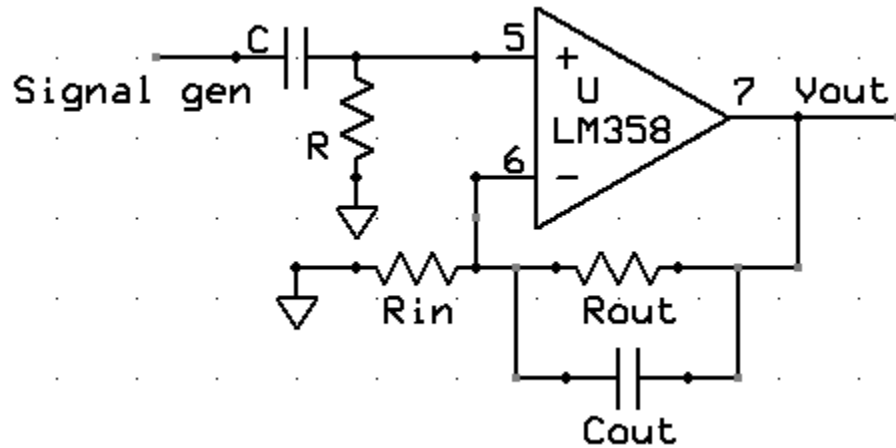
From <http://www.national.com/ds/LM/LM555.pdf>

LM358 as an amplifier and high-pass filter



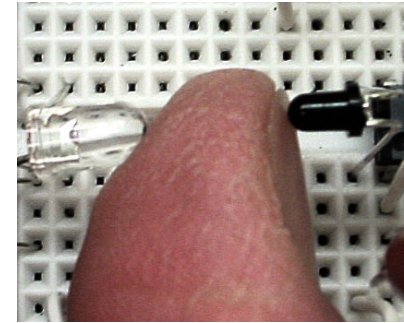
- Let $\tau=RC$. And f be the sine wave frequency of the signal generator. Define $\omega=2\pi f$.
- $V_{out} = \text{Signal_gen} * (1 + R_{out}/R_{in}) * \tau\omega / \sqrt{1+\omega^2\tau^2}$
See plot for $\tau=1$, $R_{in}=\text{infinity}$
- At zero frequency there is zero output. Another way of say this is that the circuit 'blocks' steady (DC) signals.
- This circuit is very useful for getting rid of unwanted steady signals which tend to be amplified too much and block the desired small, changing signal.

LM358 as an amplifier and band-pass filter



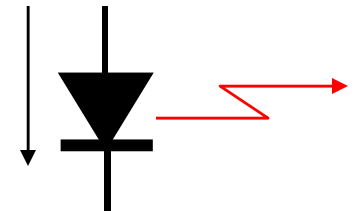
- Let $\tau=RC$ and $\tau_1=R_{out}C_{out}$. And f be the sine wave frequency of the signal generator. Define $\omega=2\pi f$.
- $V_{out} = \text{Signal_gen} * (1 + R_{out}/R_{in}) * \tau\omega / \sqrt{1 + \omega^2\tau^2} * 1 / \sqrt{1 + \omega^2\tau_1^2}$
- This circuit is very useful for getting rid of unwanted steady signals which tend to be amplified too much and block the desired small, changing signal. It also gets rid of noise at higher frequencies.

IR LED and IR sensor

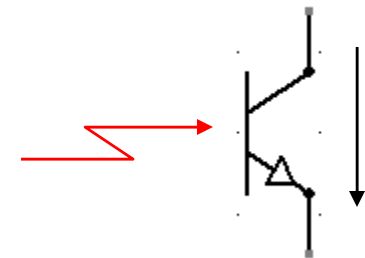


The clear device to the left is an infrared emitting LED.

- amount of light \rightarrow amount of current $L = k \cdot I$
- Wavelength (color) sets voltage.
For IR, V is around 1.2 volts
- Only works one direction
- Use your cell phone camera to see if it operates.



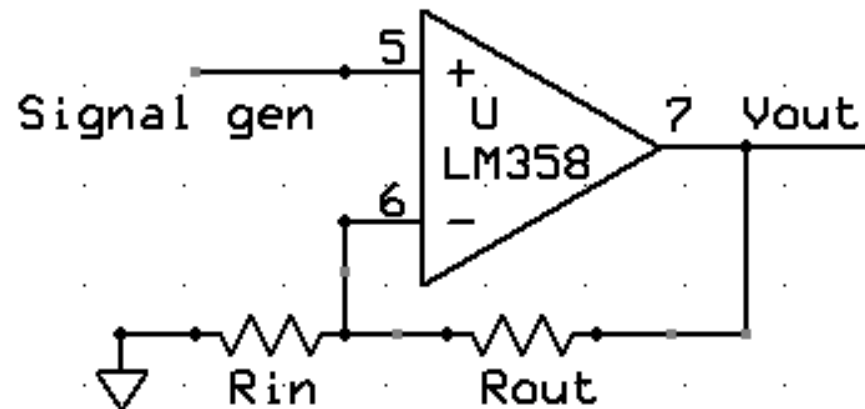
The black device to the right is an IR sensor (phototransistor)
Current flows when light is absorbed:
 $I = k \cdot L$



Your finger absorbs more IR if there is more blood.
Each heart beat sends more blood into your finger and changes the IR absorption, but the change is *small*.

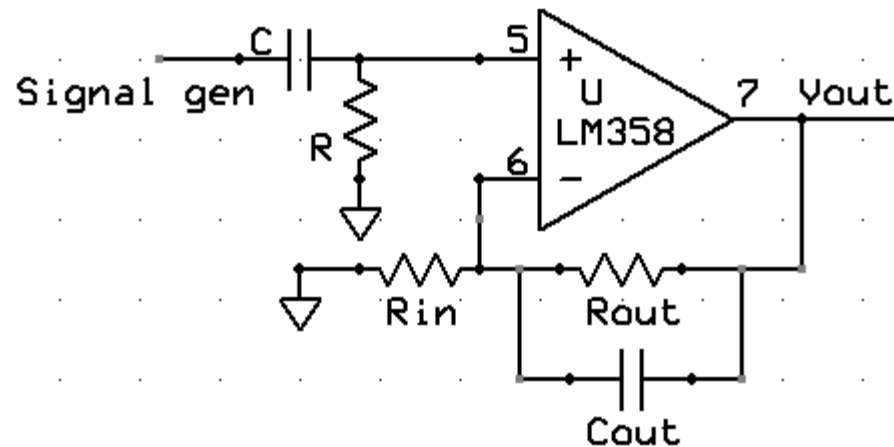
LM358 testing part 1

- Testing:
 - Build a noninverting amplifier with a gain of 101 using resistors between 100 ohms and 1Mohm. Use power supply voltages of +5 and -5 volts.
 - Test it by connecting the input to the waveform generator and the output to the scope as shown below.
 - Set up the waveform generator to produce a 0.01 volt amplitude sine wave, then hook one scope probe to the input. You may need to build a two-resistor voltage divider to make an amplitude this small.
 - Measure the output as you vary frequency. Is it constant?



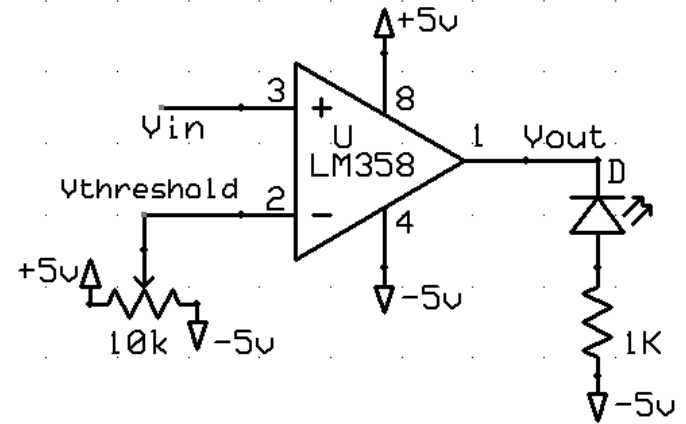
LM358 testing part 2

- Testing:
 - Build a noninverting amplifier with a gain of 11. A high pass filter at 1 radian/sec and low pass at 100 radians/sec. Use power supply voltages of +5 and -5 volts.
 - Test it by connecting the input to the waveform generator and the output to the scope as shown below.
 - Set up the waveform generator to produce a 0.1 volt amplitude square wave, then hook one scope probe to the input, another to the output and explain what you see as you vary the frequency.
 - Vary C_{out} and show what happens to the output at higher frequencies.



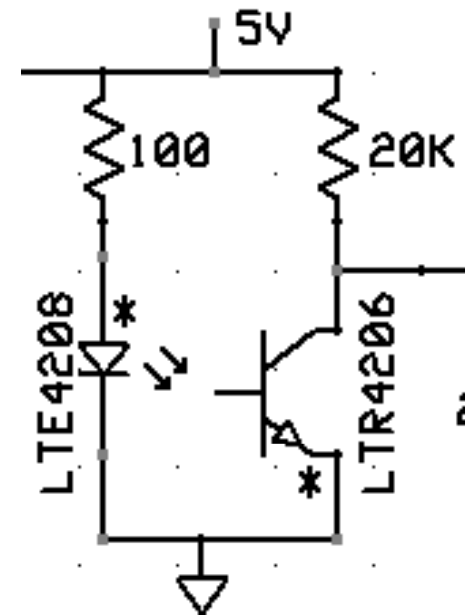
LM358 testing part 3

- Testing:
 - Build a comparator as shown to the right. The circuit *compares* two
 - voltages
 - $V_{out} = 5$ volts if $V_{in} > V_{threshold}$
 - $V_{out} = -5$ volts if $V_{in} < V_{threshold}$
 - Test it by connecting the input V_{in} to the waveform generator with a frequency of around 1 Hz and output amplitude of around 1 volt.
 - Adjust the potentiometer until the LED blinks.



LED and sensor testing

- Build the circuit shown, noting that the *long* lead of each device is marked with an asterisk.
- Hook the scope up to the output between the 20k resistor and the photosensor.
- Be sure that the LED and sensor point at each others rounded ends.
- Putting your finger between the two should result in a voltage change. How much?



Overall Scheme

- Use sensor to detect blood flow
- Amplify and filter sensor output so that easier to detect the heart beat.
- Use a comparator to detect actual beat and blink an LED. Optional -- implement an auto threshold circuit to replace the potentiometer.
- Optional – build an oscillator and make the circuit *beep* for every heart beat.
- Note that cold fingers have very little blood flow, so the circuit works poorly.